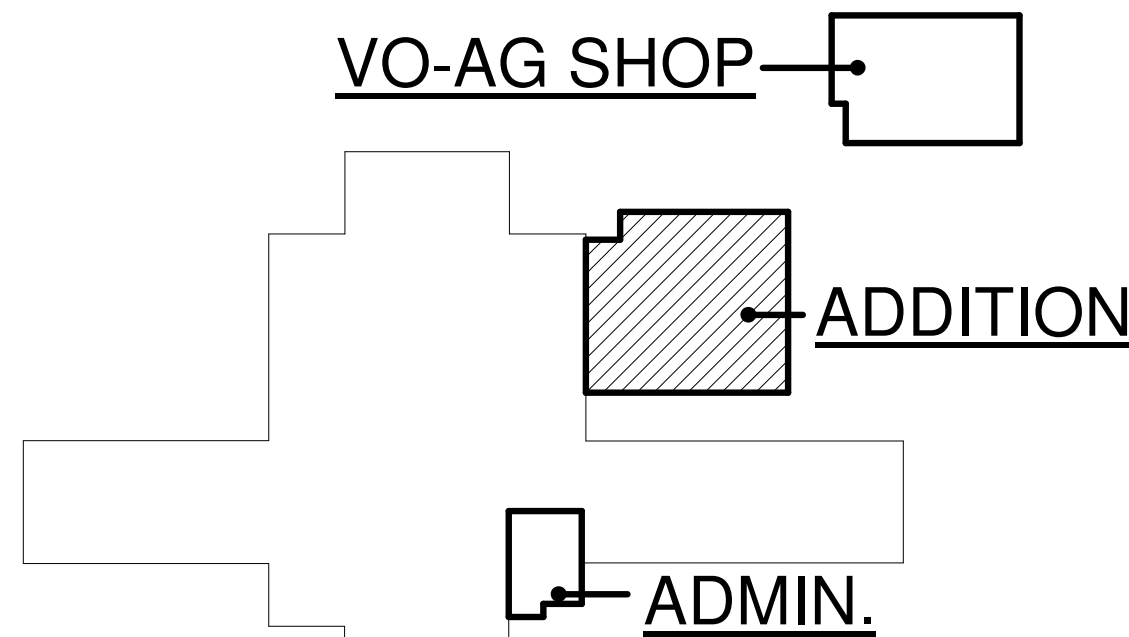


ADDITION MECHANICAL FLOOR PLAN

SCALE: 1/8" = 1'-0"



KEY PLAN



PLAN NOTES:

- EXISTING DISHWASHER HOOD TO REMAIN. PROTECT HOOD DURING CONSTRUCTION. EXISTING EXHAUST DUCT THRU WALL TO REMAIN. EXTEND EXISTING DUCT AS REQUIRED FOR NEW EXHAUST FAN LOCATION. CONTRACTOR TO FIELD VERIFY EXACT SIZE AND LOCATION OF HOOD AND DUCTWORK. NEW DUCTWORK TO MATCH SIZE AND MATERIALS OF EXISTING DUCT. NEW DUCTWORK TO BE ABOVE CEILING.
- DISCONNECT EXISTING WALL MOUNTED EXHAUST FAN. EXISTING EXHAUST FAN TO BE RELOCATED AND MOUNTED ON NEW ROOF. PROVIDE NEW ROOF CURB AT FAN LOCATION. RELOCATE EXISTING BACK-DRAFT DAMPER TO 24" HIGH NEW ROOF CURB LOCATION. REFER TO DETAIL DM3.1 FOR TYPICAL ROOF MOUNTED EXHAUST FAN INSTALLATION. CONTRACTOR TO FIELD VERIFY EXACT SIZE OF EXISTING FAN AND DUCTWORK THRU WALL. EXTEND EXISTING DUCTWORK AS REQUIRED FOR NEW FAN LOCATION. (REFER TO NOTE #1 FOR EXTENSION OF EXISTING DUCTWORK)
- EXISTING CEILING MOUNTED EXHAUST FAN TO REMAIN. PROTECT FAN DURING CONSTRUCTION. EXISTING EXHAUST DUCT TO SOFFIT GRILLE TO BE EXTENDED TO NEW ROOF CAP AS CALLED OUT. (SEE NOTE #4.)
- DISCONNECT AND REMOVE EXISTING SOFFIT GRILLE AND PART OF EXISTING EXHAUST DUCT AS REQUIRED FOR NEW CONSTRUCTION. CONTRACTOR TO FIELD VERIFY EXACT SIZE AND LOCATION OF EXISTING EXHAUST DUCT. PROVIDE DUCT TRANSITION AS REQUIRED TO EXTEND 6" DIA. DUCT OUT TO NEW ROOF CAP AS SHOWN. RISE 6" DIA. DUCT UP THRU ROOF OF NEW ADDITION WITH ROOF CAP. SEAL DUCT PENETRATION WATER TIGHT. REFER TO DETAIL CM3.2 FOR TYPICAL INSTALLATION OF ROOF CAP.
- PROVIDE AND INSTALL NEW SEPARATED COMBUSTION UNIT HEATER AS SPECIFIED. REFER TO DETAIL HP3.1 FOR CONNECTION OF LP GAS LINE WITH SHUT-OFF VALVE AND FLEXIBLE HOSE. EXTEND VENTS FROM UNIT HEATER OUT THRU EXTERIOR WALL WITH CONCENTRIC TYPE FITTING. REFER TO DETAIL LM3.1 FOR TYPICAL INSTALLATION OF UNIT HEATER AND VENTS THRU WALL. KEEP VENT THRU WALL AS HIGH AS POSSIBLE.
- PROVIDE AND INSTALL ROOF MOUNTED HVAC UNIT AS SPECIFIED. MOUNT UNIT ON ROOF CURB. DROP SUPPLY AND RETURN DUCTS DOWN THRU ROOF INTO JUST SPACE COORDINATE UNIT LOCATION WITH ROOF JOISTS AND PLACE DUCT DROPS BETWEEN JOISTS. REFER TO DETAIL CM3.1 FOR TYPICAL UNIT MOUNTING.
- ROUND SUPPLY DUCTS TO BE RUN THRU ROOF JOISTS. (CONTRACTOR TO FIELD VERIFY SIZES OF ROOF JOISTS FURNISHED.) COORDINATE DUCT LOCATIONS WITH BASKETBALL STANDARDS. CONDUITS AND PIPING AS WELL. PROVIDE SUPPLY GRILLE IN ROUND DUCTS AS SPECIFIED. MOUNT GRILLE AT 45 DEGREES DOWN FROM HORIZONTAL. REFER TO DETAIL DM3.1 FOR TYPICAL GRILLE INSTALLATION.
- ROUND RETURN DUCTS TO BE RUN THRU ROOF JOISTS. (CONTRACTOR TO FIELD VERIFY SIZES OF ROOF JOISTS FURNISHED.) COORDINATE DUCT LOCATIONS WITH BASKETBALL STANDARDS. CONDUITS AND PIPING AS WELL.
- DROP 48x24 RETURN AIR DUCT DOWN WALL. OFFSET DUCT AS REQUIRED TO BE TIGHT AGAINST WALL. DROP DUCT DOWN IN CHASE TO ELEVATION AS INDICATED.
- MOUNT RELIEF AIR GRILLES AND DUCTWORK IN EXTERIOR WALL AS HIGH AS POSSIBLE OVER DOORWAY. PROVIDE MOTORIZED DAMPER AND INTERLOCK WITH AIR HANDLER FOR FULL ECONOMIZER CYCLE. REFER TO DETAIL BM3.2 FOR TYPICAL INSTALLATION OF RELIEF AIR GRILLES AND DUCTWORK.
- PROVIDE NEW ROOF MOUNTED EXHAUST FAN AS SPECIFIED AND MOUNT ON ROOF CURB. DROP 14x14 DUCT DOWN THRU ROOF AND PROVIDE TRANSITION AS REQUIRED FOR EXHAUST DUCTS ABOVE CEILING. REFER TO FLOOR PLAN. REFER TO DETAIL DM3.1 FOR TYPICAL INSTALLATION.
- PROVIDE AND INSTALL HORIZONTAL FURNACE AS SPECIFIED. MOUNT ABOVE CORRIDOR CEILING WITH SHEET METAL DRAIN PAN BELOW. SUPPORT FROM ROOF STRUCTURE. CONNECT TO SUPPLY AND RETURN DUCTS WITH FLEXIBLE CONNECTION. REFER TO DETAIL BM3.1 FOR TYPICAL INSTALLATION AND PIPE CONNECTIONS. EXTEND (2) 3" DIA. FURNACE VENTS OVER AND RISE UP THRU ROOF AT 18" MAXIMUM AWAY FROM HIGH CHIM WALL. PROVIDE CONCENTRIC TYPE FITTING AT ROOF PENETRATION. REFER TO DETAIL AN3.2 FOR TYPICAL VENT TERMINATION.
- CONNECT 10x6 OUTSIDE AIR DUCT TO EACH FURNACE LOCATION. PROVIDE MOTORIZED DAMPER, ACCESS DOOR AND MANUAL BALANCING DAMPER IN EACH DUCT. BALANCE TO 300 CFM MAXIMUM FOR EACH FURNACE. REFER TO DETAIL FM3.1 FOR TYPICAL DAMPER INSTALLATION.
- COORDINATE BRANCH DUCTS WITH ROOF JOISTS AND LIGHT FIXTURES. FIELD VERIFY ACTUAL CONDITIONS ON SITE DURING CONSTRUCTION.
- MOUNT RETURN AIR GRILLE AT 6" ABOVE FLOOR. RISE RETURN DUCT AS CALLED OUT UP IN CHASE TO ABOVE CEILING. COORDINATE LOCATION OF ROOM SENSOR WITH RETURN GRILLE.

gpc architects

18 N. Main St., Ste. 200
Driggs, Idaho 83422
208.354.8036
www.gpcarchitects.com

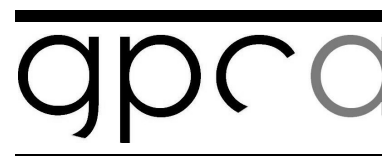


Ownership & Use of Documents

Drawings and specifications, as instruments of professional service, are and shall remain the property of the architect. These documents are not to be used in whole or in part for any project or purposes whatsoever, without the prior specific written authorization of GPC Architects PLLC.



TETON SCHOOL DISTRICT 401
TETON HIGH SCHOOL ADDITION



revisions		
no.	description	date

project: 18003
date: 02/22/2019

ADDITION
MECHANICAL
FLOOR PLAN

sheet:

M1.1